

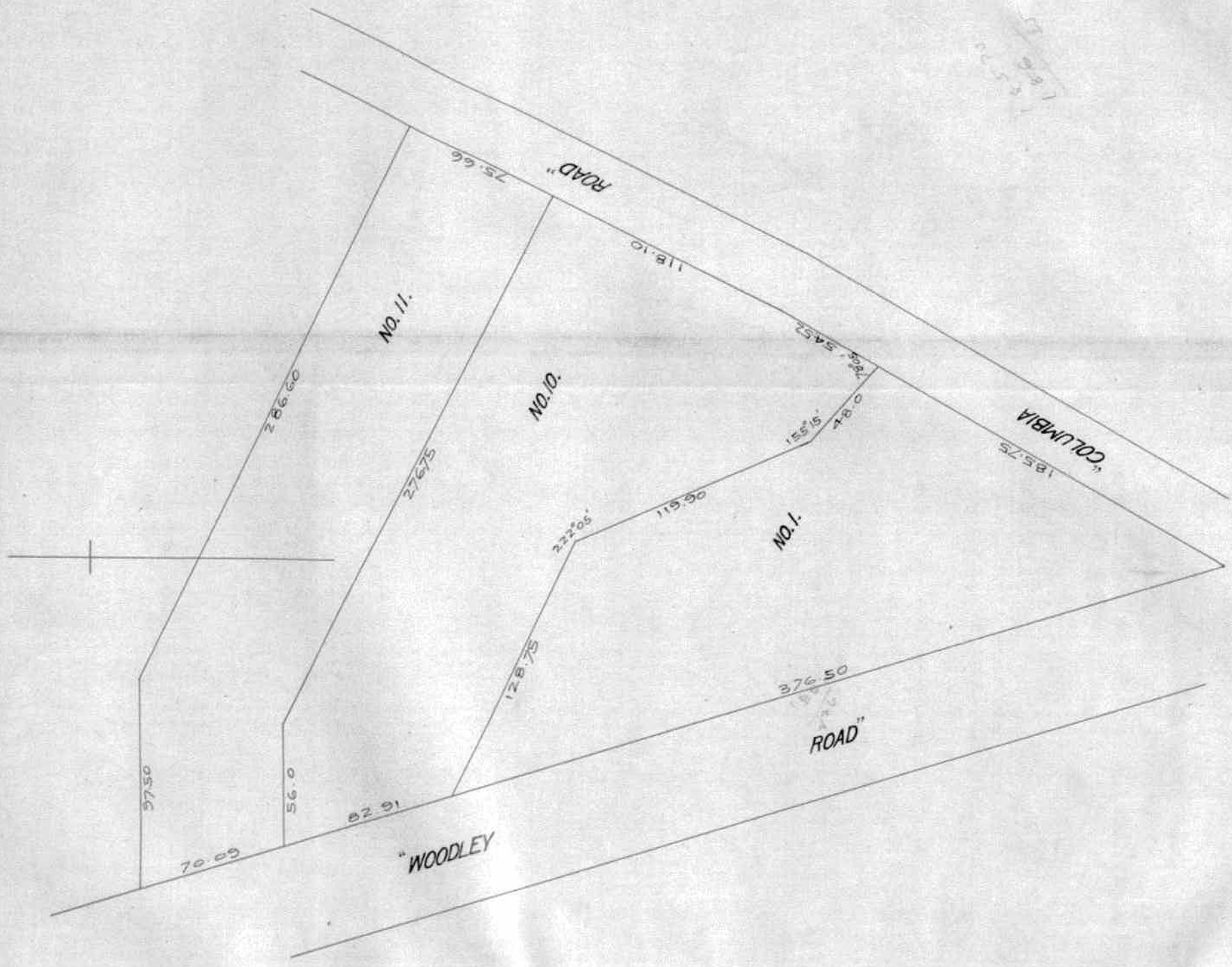
PLAT OF THE SUBDIVISION OF THE LAND
 BELONGING TO THE HEIRS OF THE LATE
 JOHN LITTLE, ESQ., NEAR THE CITY OF WASH-
 INGTON, D.C.
 FEBRUARY 2nd, 1880
 SCALE - 40' = 1" (SIGNED) B.D. CARPENTER,
 SURVEYOR.

AREA OF LOT NO 1	ACRES	SQ. FT.
1	1.0000	43560
2	0.2500	10890
3	0.2500	10890
4	0.2500	10890
5	0.2500	10890
6	0.2500	10890
7	0.2500	10890
8	0.2500	10890
9	0.2500	10890
TOTAL	1.0000	43560

WE THE OWNERS OF A TRACT OF LAND IN THE
 COUNTY OF WASHINGTON IN THE DISTRICT OF COLUMBIA,
 HAVE AGREED UPON A SUBDIVISION THEREOF, AS LAID
 DOWN ON ABOVE PLAT INTO LOTS NUMBERED FROM
 ONE (1) TO NINE (9) BOTH INCLUSIVE. IN WITNESS WHERE-
 OF, WE HAVE HERETO SET OUR HANDS AND SEALS
 THIS 2nd DAY OF FEBRUARY A.D. 1880.

WITNESSES
 (SIGNED) JOSEPH ALLEN
 (SIGNED) MARGARET F. LITTLE SANDS
 (SIGNED) JOSEPH ALLEN (IN PRSEN)
 (SIGNED) FANNELLA M. ALEXANDER
 WITNESS ALSO HER DOY THE LITTLE
 SANDS, (SIGNED) AL JOHNSON
 (SIGNED) JOHN A. LITTLE
 (SIGNED) JOHN LITTLE (SIGNED)
 (SIGNED) ANNE F. BALDWIN

SEAL
 SEAL
 SEAL
 SEAL
 SEAL



WASHINGTON, D.C. AUGUST 7-TH, 1883.

THIS IS TO CERTIFY, THAT WE HAVE SUBDIVIDED LOT 2 (SEE MARGARET F. LITTLE SANDS AND OTHERS SUBDIVISION, RECORDED ON PAGE 107 OF THIS BOOK), INTO LOTS 10 AND 11 AS SHOWN ABOVE.

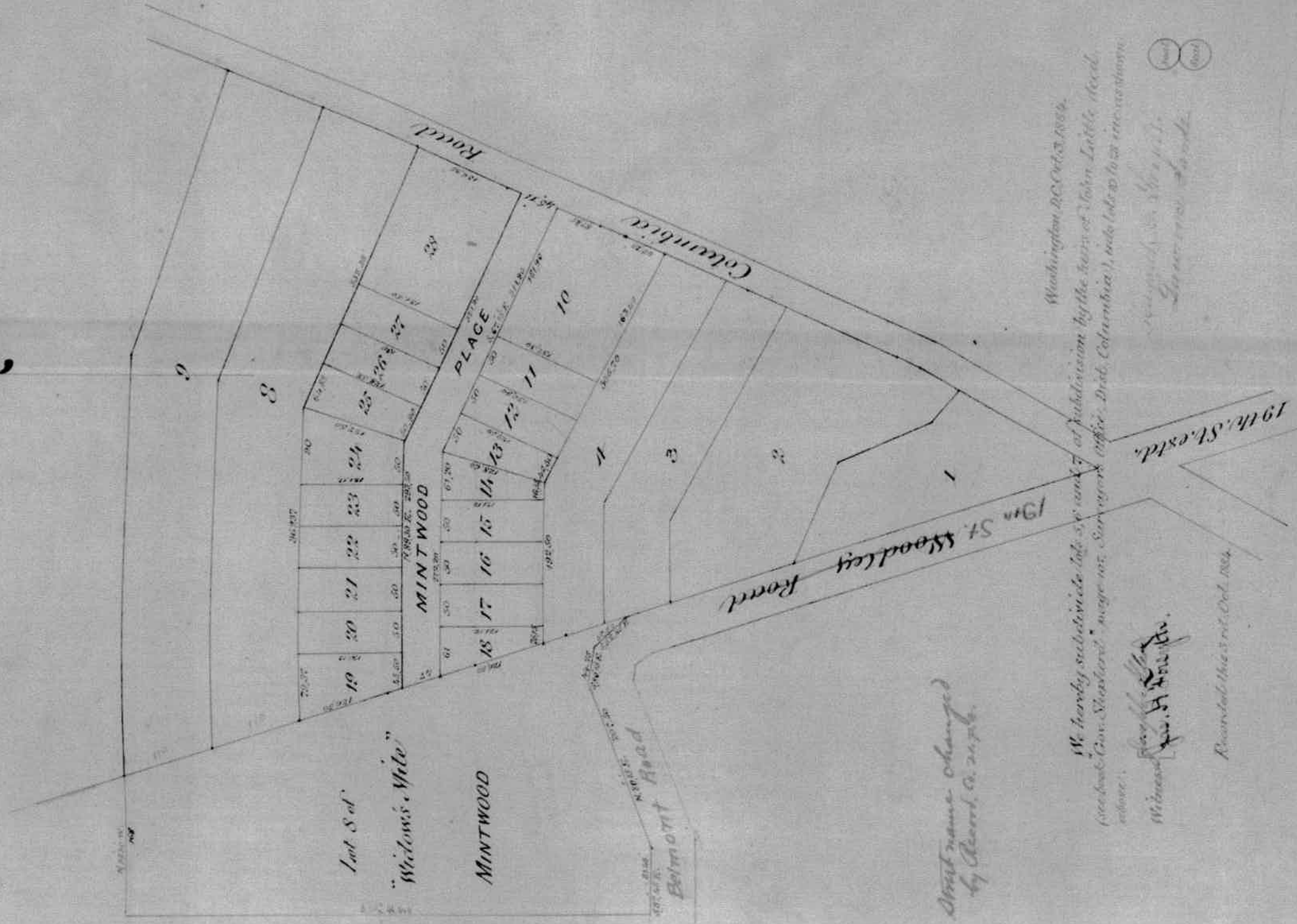
WITNESS } (SIGNED) JAS. H. FORSYTH
 (SIGNED) JOSEPH ALLEN

I HEREBY CERTIFY, THAT I HAVE EXAMINED THE ABOVE PLAT OF SUBDIVISION AND FIND THE SAME CORRECT AND TO CORRESPOND WITH THE RECORDS OF THIS OFFICE.

GIVEN, UNDER MY HAND AND OFFICIAL SEAL, THIS AUGUST 7-TH, 1883.

(SIGNED) WM. FORSYTH
 SURVEYOR, DISTRICT OF COLUMBIA

(SIGNED) IDA LITTE STEVENS
 (SIGNED) S. L. LITTLE
 (SIGNED) FINNELLA M. ALEXANDER



Street name changed
by Chart. A. 2176.

Washington, D.C. Oct. 3, 1864.
We hereby subdivide lots 5, 6 and 7 of subdivision by the name of John Little, Decd.
(see book Gov. Shuster's page 107, Surveyor's Office, Dist. Columbia), into lots 10 to 27 inclusive
as above.

Witness my hand
this 3rd day of Oct. 1864.

(Seal)
(Seal)

Wm. H. Woodley
Surveyor D.C.

